

In the Presence of the Lord

(Based on Psalm 116)
Andante (♩ = c. 80)

Paul F. Page
ASCAP
A

piano

The piano introduction consists of two staves in 4/4 time. The right hand features a melodic line with eighth and sixteenth notes, while the left hand provides a harmonic accompaniment with chords and single notes.

5 SA/Assembly FINE

Musical staff for SA/Assembly, starting at measure 5. It contains the first line of the vocal melody.

I will walk in the pre-sence of the Lord. I will sing of the good things done for me.

5 TB/optional* FINE

Musical staff for TB/optional*, starting at measure 5. It contains the second line of the vocal melody.

5 F A Dm F7 Bb F/A Gm7 C7 F FINE

Piano accompaniment for measures 5-9, including chord symbols: F, A, Dm, F7, Bb, F/A, Gm7, C7, F. The right hand has a melodic line with some slurs, and the left hand has a bass line.

10 3

Musical staff for the first verse, starting at measure 10. It includes a triplet of eighth notes at the end of the line.

1. I love the Lord for he heard my voice. When I called he answered me. E-ven when

Musical staff for the second verse, starting at measure 10.

2. Gra-cious is the Lord, full of jus-tice and mer-cy. The Lord keeps his child-ren safe. ——— Though

Musical staff for the third verse, starting at measure 10.

3. The Lord has freed my eyes from tears and my feet he has kept from stum-bling. I shall

10 BbM7 C/Bb Am7 Dm Gm7 C7 A Dm

Piano accompaniment for verses 1-3, starting at measure 10. It includes chord symbols: BbM7, C/Bb, Am7, Dm, Gm7, C7, A, Dm. The right hand has a melodic line with slurs, and the left hand has a bass line.

14



1. death was up-on me the Lord heard my cry: "O Lord, please save my life."

14



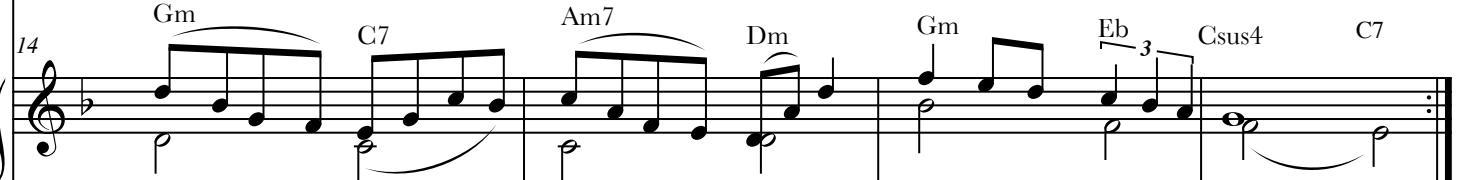
2. I was brought low, — the Lord res-cued me. — The Lord gave me last - ing peace.

14

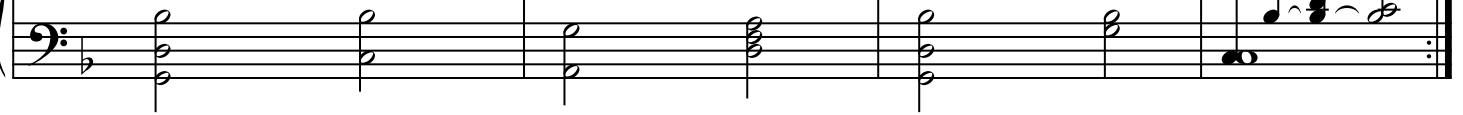


3. walk be-fore the Lord in the land of the liv - ing be - cause the Lord gives me life.

14



14



** Optional piano interlude after vs. 2

18



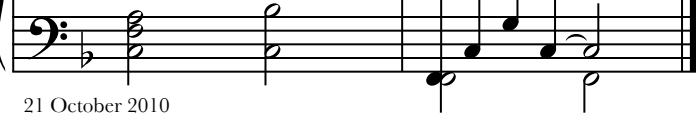
18



22



22



* After the first Refrain, harmony may be added as desired to enhance the message of the text.

** The piano interlude may be played after vs. 2 or 3 as desired and/or to conclude the piece after the final Refrain.